

ROV

Size	480*267*165mm
Weight	≈5.7KG
Max Depth	490ft
Max Speed	2m/s (4 Kn)
Runtime	Up to 4H
Battery	300Wh
Operating Temperature	-10°C~45°C

CHARGER

Power	2.9A/25.2V
Rov Charging Time	4.5H
Rc Charging Time	2H

LED

Brightness	2*2000 Lumens
Color Temperature	5000K~5500K
Cri	85
Dimming	THREE GEARS

Control Console

Size	484*375*178mm
Weight	≈8 Kg
Display	1920*1080,1000cd/m2
Operating Temperature	-10°C ~ 45°C
Power Supply	21.6 V
Interface	RJ45*2, USB 2.0*2, QC3.0 USB*1, AC Input*1, AC output to ROV*1

CAMERA

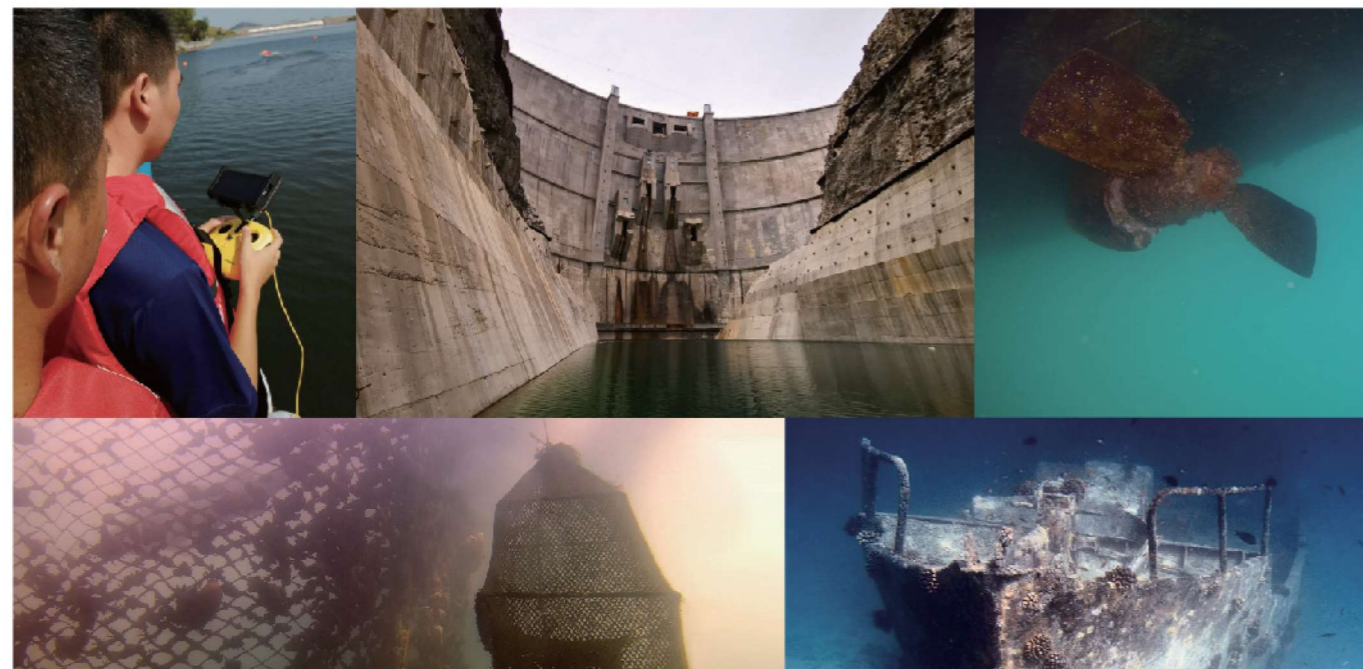
Cmos	1/2.3
Lens	F1.8
Focus	1m
Iso Range	100-6400
Fov	152°
Max Resolution	12 Meg Pixel
Format	JPEG/DNG
Video	UHD:3840*2160 (4K) 30fps FHD:1920*1080 (1080p) 30/60/120fps
Slow Motion	720p:8x (240fps); 1080p:4x (120fps)
Time Lapse	4K/1080p supported
Video Stream	60M
Video Format	MP4
Sd Card	128G

SENSOR

Imu	axis gyro/accelerometer/compass
Depth Sensor	< ±0.25m
Temperature Sensor	< ±2°C

Remote Controller

Size	160*155*125
Weight	685g
Battery	2500mAh
Runtime	≥6H(depending on the environment)
Wireless	Wi-Fi supported
Hdmi	Support
Handle Spring	Maximum support 10 inch



CHASING

www.chasing.com
sales@chasing-innovation.com

CHASING



CHASING M2 PRO

Hybrid power supply · Stronger power · More accessories

CHASING M2 Pro is a professional underwater ROV designed for professional users and industrial applications. M2 Pro has 8 Vectored Thrusters layout which allows OMNI movement in all directions. Compared to the CHASING M2, the M2 Pro motor has been upgraded by 50%. The Maximum speed is 4 Knots, depth is 150 meters (490 FT) and the maximum horizontal radius is 400 meters (1300FT). M2 pro support AC and battery hybrid power supply to achieve unlimited battery life. Not only compatible with sophisticated attachments such as Grabber Claw, Floodlight and laser scaler etc, but also compatible with Control Console (High-brightness Screen), Docking station, USBL underwater positioning, 700Wh battery, Multibeam sonar, Auxiliary Camera and other M2 Pro Exclusive Enhanced Accessories. CHASING M2 Pro offers a built in 4K/ 1080p and 12 megapixel EIS image stabilization camera, 4000 lumen LED lights, removable battery and removable Micro SD memory card. The aluminum alloy compact body (weighs less than 6KG / 13lbs) allows single person operation and Quick-Deployment in 3 minutes. The CHASING M2 Pro is your portable, easy use and reliable light industrial underwater ROV.

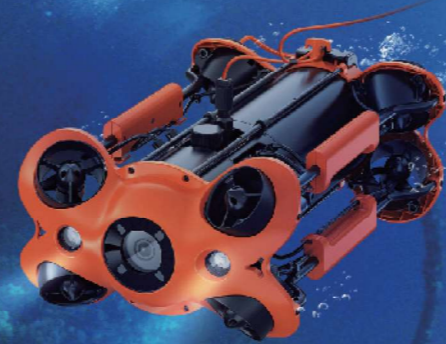
Stronger power, 4 knots speed



8 Vectored-Thrusters Layout, Anti-Stuck Motor.
Single motor power 150W, allows OMNI movement in all directions with 4 Knots speed(2m/s).
Compared to the CHASING M2, M2 Pro motor has been upgraded by 50%.

Maximum dive depth 150 meters(490 FT)

The maximum horizontal radius is 400 meters (1300FT), Explore more unknown.



● Standard

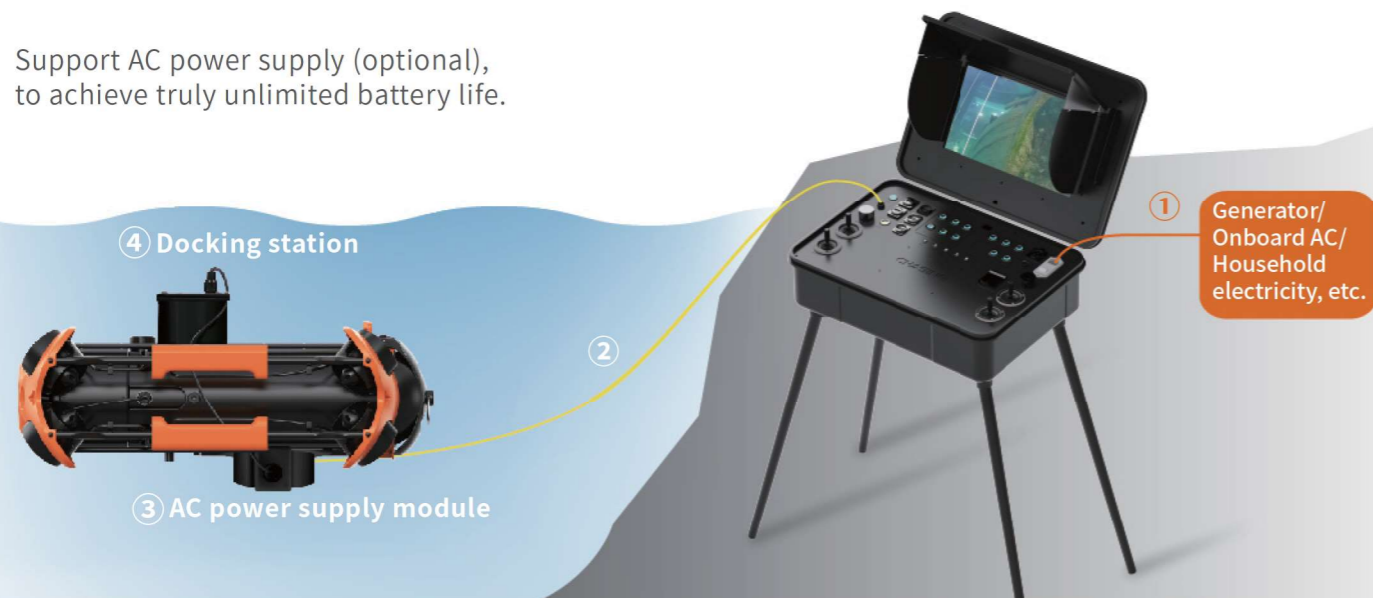
● Optional

700Wh battery, 5 hours battery life

The default 300Wh lithium battery, Optional 700Wh Replaceable Battery(support Hybrid power supply) will make your operation time unlimited.

Unlimited battery life with AC power supply

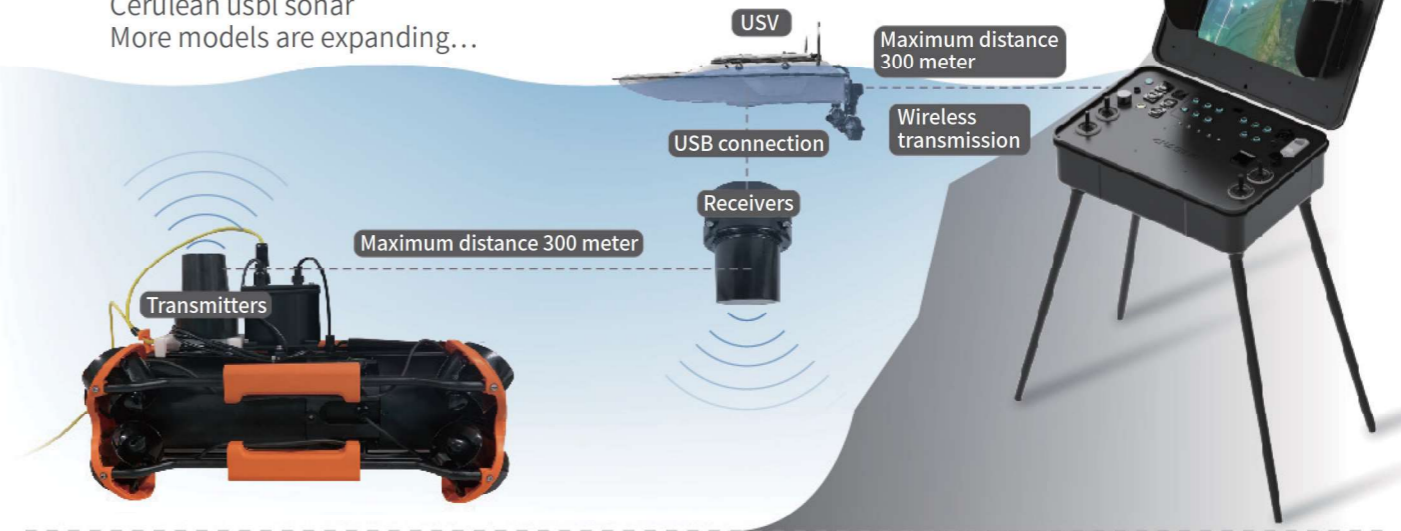
Support AC power supply (optional), to achieve truly unlimited battery life.



USBL underwater positioning, Multibeam sonar and more accessories

USBL underwater positioning

Support model:
Cerulean usbl sonar
More models are expanding...



Multibeam sonar

Support model:
Blueprint Oculus/M370S/M750D/M1200D
More models are expanding...



Leakage protection switch
ROV function zone



**Control Console,
be visible in sunlight**